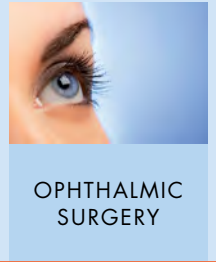


500 XLE comfort

The reclining treatment chair designed for a particularly high level of comfort and two-tone design.



Order No. 15000006 + 30370080

ADVANTAGES



- Thicker comfort upholstery well suited for longer surgical procedures (e.g. retina surgery)
- Optimized price-performance ratio
- Ample legroom and unobstructed access to the patient's head
- Space-saving design for flexible use, outstanding maneuverability even in the most confined of spaces
- Multi-functional manual keypad with 4 memory positions and auto-run function
- Automatic switch-off with reactivation button at foot keypad
- Sterile working conditions without interruption thanks to adjustment functions provided by the foot keypad
- Not location-bound thanks to battery operation



- Easy maneuverability thanks to mechanic guidance operated via foot switch
- 360-degree rotating, electrically conductive double casters for outstanding movement characteristics
- Stool & table combination – no need for shifting or relocating the patients
- Service-friendly access for easy cleaning and maintenance
- User-friendly



- Easy mounting and dismounting, low access height
- Comfortable armrests for high patient safety, removable
- Patient-friendly comfort upholstery including integrated knee support cushion in a two-tone design





Power supply-independent battery box with integrated emergency stop button.



Removable foot switch with infinite electronic height and head adjustment including reactivation button.



Standard sculptured headrest for high-precision patient positioning, adjustable via manual switches or foot switches.



2 mechanically operated braking levers with steering guide function.



Comfortable armrests for high patient safety, removable.



Electrically conductive double casters for secure positioning and perfect handling characteristics.

EQUIPMENT



Detachable push handles.

360-degree rotating double casters with full lock and "Steering Guide" function.

Folding-down armrests for simple entry and exit.

Ample legroom for the surgeon – for optimized access to the patient.



Multi-functional manual keypad with positions memory and auto-run function.
Optional: Hand control holder
Order No.: 33510027



Memory manual switch with four freely storable memory positions and auto-run function.



Integrated knee support cushion, individually positionable to suit every patient's body height.



Two-tone comfort upholstery for even more comfortable sitting/reclining positions.



Zinc-primed chassis with anthracite structured finish. Scratch-resistant, hard-wearing, ABS covering in white.



Detachable push handles on the foot ends for easy maneuvering.



Telescopic stainless-steel accessories storage system.

EQUIPMENT



Thicker comfort upholstery and integrated knee support cushion, individually positionable to suit every patient's body height.

Order No.: 30370080

Detachable push handles on the foot end.

Two-tone comfort upholstery (anthracite F6461197 / chrome F6461205 standard shade) for even more comfortable sitting/reclining positions.

Order No. 30370092



Available in a wide variety of colors.

500 XLE *comfort*

500 XLE

PREMIUM ACCESSORIES

- Foot part extension
- Removable back part sliding handles
- Side parts incl. quick-release clamp



OPHTHALMIC
SURGERY



Removeable back part sliding handles

Order No.: 33510046



Foot part extension incl. foot support for lower patient access height

Order No.: 33510049



Removeable back part sliding handles

Order No.: 33510046

Side parts (right + left)

Order No.: 33510050





Adjustable foot part extension incl. foot support for easier mounting and dismantling of the patient.



Different positions of the foot part extension.



Side parts right and left prevents lateral slipping of the patient.



Norm rail for seat part for mounting accessories.



Back part sliding handles for maneuvering in lying position.



Back part sliding handles for maneuvering in sitting position.

Side parts (right + left) for mounting on norm rail (Order No.: 33510047), longitudinally adjustable
Order No.: 33510050



Foot part extension incl. foot support
Order No: 33510049
For easier mounting and dismantling of the patient
The foot part is extendable up to 190 mm.



Removable back part sliding handles, adjustable in different positions.
Order No.: 33510046

500 XLE & 500 XLE *comfort*

ACCESSORIES



PADDED ARM BOARD
with universal joint, with wrist
secure straps
Order No. 33510011



BACKUP BATTERY
Order No. 30470000



SIDE PARTS
(right + left) swiveling incl.
locking, upholstered
Order No. 33510012



SIDE PARTS
(right + left) incl. quick-re-
lease clamp for mounting on
norm rail (without norm rail
33510047) 580x200mm
Order No. 33510050



FLEXIBLE SURGICAL DRAPE
SUPPORT ROD
with oxygen connection
Order No. 32060000



FLEXIBLE SURGICAL DRAPE
SUPPORT ROD
without oxygen connection
Order No. 32050000



WRIST REST
incl. mounting plate
30130000, adjustable
Order No. 30140000



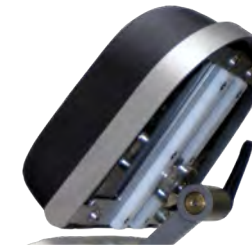
WRIST REST
incl. mounting plate
30130000, adjustable, tiltable
Order No. 30140005



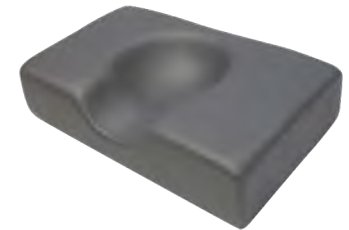
HAND CONTROL HOLDER
PVC
Order No. 33510027



HAND CONTROL HOLDER
for attachment onto an I.V.
Pole ø 25/18 mm, PVC
Order No. 33510036



HEAD PART BUMPER
stainless steel
Order No. 30280000



HEAD FIXYTION PILLOW
with hollow (rubins pillow), 41
x 25 cm, height: 10 cm
Order No. 30220000

500 XLE & 500 XLE comfort

ACCESSORIES



I.V. POLE stainless steel
ø 25/18 mm, one-hand height-
adjustable 1070–1660 mm, 4
hooks, max. 2 kg 84.4lbs/hook,
glass and holder
Order No. 30680000



MONITOR ARM
stainless steel, swiveling, incl.
extendible I.V. Pole ø 25 mm
Order No. 30240014



ACCESSORY MOUNTING
SUPPORT
stainless steel
Order No. 33510037



SLIDING HANDLES
back part
Order No. 33510046



ADDITIONAL HANDLES
pair
Order No. 33510017



FOOT PART EXTENSION
incl. foot support
retrofit kit
Order No. 33510048
factory-fitted, upcharge
Order No. 33510049



FOOT PROTECTION FOIL
Order No. 30920001



OXYGEN CYLINDER HOLDER
Order No. 30720002



NORM RAIL
seat part
Order No. 33510047



MOUNTING PLATE
stainless steel for the wrist rest
30140000
Order No. 30130000



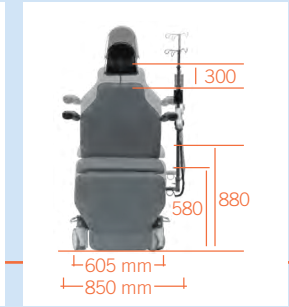
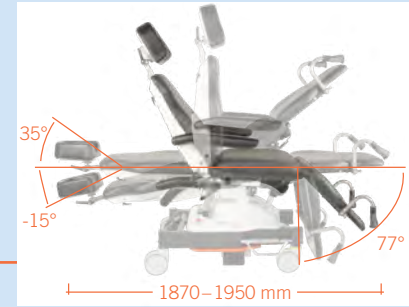
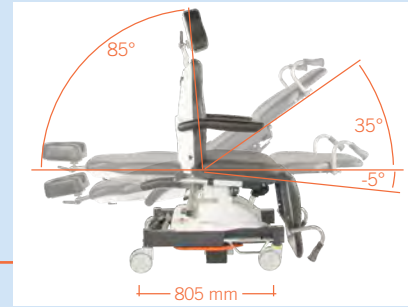
INSTRUMENT TABLE
50 x 30 x 1.5 cm, height-ad-
justable, swiveling, detachable,
incl. adapter
Order No. 30650000



SHOULDER PARTS
right and left
500 XLE
Order No. 30710000
500 XLE comfort
Order No. 30710001

500 XLE

500 XLE *comfort*



SPECIFICATIONS

Chassis

- Frame profile 90 x 50 mm
- Outside length 805 mm
- Outside width 605 mm
- Width incl. armrest 850 mm
- Zinc undercoat, elegant anthracite matte finish
- Brake operable from both sides and acting on two (2) wheels each; 2 wheels featuring independent directional wheel positioning
- Double rimmed casters ø 125 mm
- Detachable foot keypad (total up/down, head up/down)
- Emergency stop button
- Visible screws are stainless steel
- With equipotential bonding connection

Lifting Column

- Max. lifting force 300 mm
- Max. patient weight 250 kg
- Motors IPX4 with HAL sensoric, to be memorized

Upper Frame

- 4-part support frame (head, back, seat, foot)
- Length 1,870-1,950 mm
- Width 610 mm

- Access height 580 mm
- Removeable upholstery
- Tundra skai colors see color chart

	Max. Load	Angle	Dimensions (l x w)
- Head part	20 kg	-15°/+35°	300 x 250 mm
- Back part	90 kg	0°/+85°	610 x 610 mm
- Seat part	90 kg	-5°/+35°	450 x 610 mm
- Leg part	50 kg	0°/+77°	510 x 610 mm
- Trendelenburg		-12°	
- Height adjustment	250 kg		from 580-880 mm
- Armrests	30 kg ea.	0°/+180°	(2 x) 470 x 75 mm

Electronic Control

- All components according to IPX4
- Manual keypad with 4 individually programmable memory positions, auto-run function, reset button
- Foot keypad with 4 foot switches and reactivation button

Battery unit

- Battery box with 2 batteries (lead-gel), pollution free, maintenance-free, cadmium-free 2 x 12 V 7.2 Ah
- As back-up-system exchangeable without tools

- Acoustic low voltage signal for discharge protection
- Universal battery charger Input: 100-240 V, Output: 24 V

Operating Time Per Battery Charge

- Measured by operating circle (Prepare-Operate-Recover) 100 OPs
- Quantity of operating circles depends on individual operation

Electromotive Drives

- Head, back, seat, foot, total up/down
- Trendelenburg/Reverse Trendelenburg

Further Technical Details

- Chair has detachable, swiveling armrests made completely with PU foam
- Detachable seat for service friendly access to electric components

Max. Load 250 kg

Weight 135 kg

Subject to technical modifications.

Distribuido por: Accutomex SA de CV
www.accutomex.com
ventas@accutomex.com
Tel. +52 (81) 8347-2520 / 01-800-800-0507